



NESTLE® USA INTERNATIONAL CATALOG

2022



Lean Cuisine



Good Food, Good Life

All trademarks are owned by Société des Produits Nestlé S.A., Vevey, Switzerland, or used with permission.



Finding Our Consumer Around the World

#1

US “Aspirational”

& Rest of the World



Consumers are pursuing **authentic food experiences** through US innovations in flavor, format and function.



US Products aspirational buys



Growing number of cultural explorers



Cultural and values proximity
That naturally drives awareness to US products



Novelty and experimentation
New “cool” products: Toll House cookie Dough, veggie pizza, etc.

This global phenomenon is **accelerated** by:



Tourists

Expatriates that seek a taste of home.

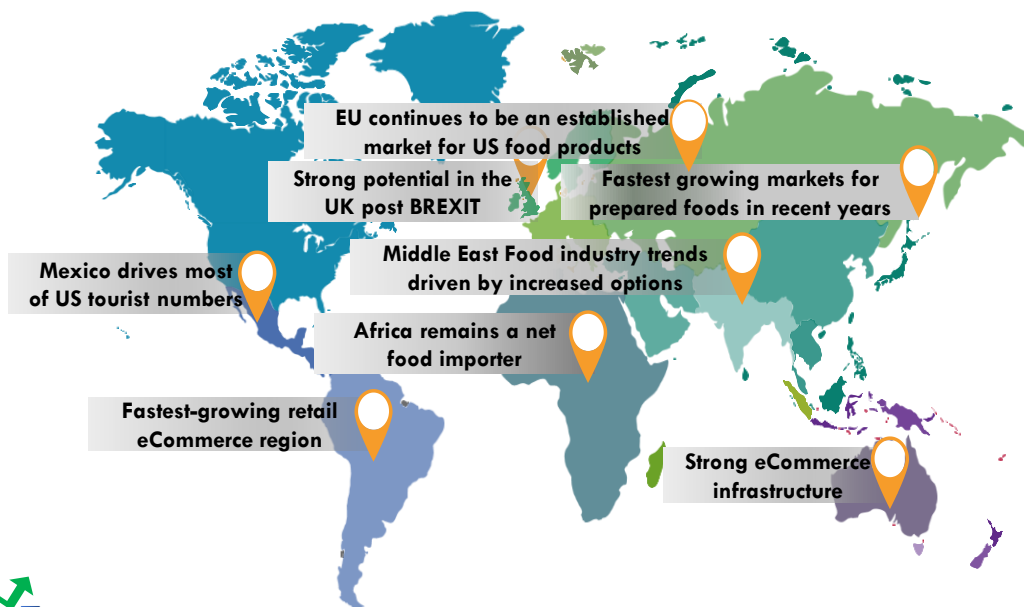
#2

Retail Landscape and RTM

Shifting behaviors accelerated by COVID transforming Tourism, eCommerce & OOH consumption

Multi-Channel capabilities including:
✓ Retail
✓ Club
✓ eCommerce & B2B

Growth of ethnic aisles highlighting US products in International Markets



NESTLE® has a brand for **every single moment** of a consumer's day and life stage. Such **wide portfolio** drives up the average basket size allowing retailers to maximize shopping trips of a **single shopper**.

BREAKFAST



LUNCH



DINNER



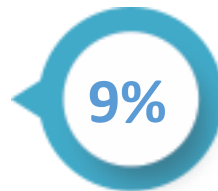


COFFEE CREAMERS & SOLUBLE COFFEE

As **coffee** evolves from its pure functional benefits to an experience and sometimes even a ritual, consumers are looking for options to create the **perfect cup** with the **perfect flavor**



Coffee creamers as the natural evolution in the **coffee experience** are accelerating worldwide



(CAGR, 2020-2024)

It follows the trends of cup personalization and balances the need for indulgence and healthier options

Although out of home consumption [36%] is smaller compared to in-home [69%], it is growing at a faster rate as consumer's purchasing power increases. **Category growth** opportunity comes from the ability of bringing in those OOH consumers with the right portfolio offer

With **COFFEE MATE®** worldwide leader with nearly **40%** market share & **NESCAFÉ® TASTER'S CHOICE**, retailers have the best options to attract consumers craving for their perfect, life-style customized cup

As life gets busy, self-rewarding becomes important and despite health consciousness, **balanced indulgence** continues to be a growing trend among consumers

With a wide range of flavors, **COFFEE MATE®** is the perfect option for those looking to elevate their cup, their way

Responding to the **HEALTH and WELLNESS** trend and the increasing demand for plant based products, **COFFEE MATE® NATURAL BLISS** offers **all-natural**, clean label ingredients, with both **dairy & alternative milks**

BALANCED INDULGENCE



SOLUBLE COFFEE
(Jars and On-the-go format)



LIQUID REFRIGERATED

ASEPTIC

HEALTH CONSCIOUS



LIQUID REFRIGERATED



Also in: 16, 64oz

COFFEE MATE® LIQUID

French Vanilla

Pack Size: 6 units x 32 fl. oz.
Cases per pallet: 132
Shelf Life: 210 days
Globe Code: 12295752



Also in: 16, 64oz

COFFEE MATE® LIQUID

Hazelnut

Pack Size: 6 units x 32 fl. oz.
Cases per pallet: 132
Shelf Life: 210 days
Globe Code: 12295754



COFFEE MATE® LIQUID

Sugar Free French Vanilla

Pack Size: 6 units x 32 fl. oz.
Cases per pallet: 132
Shelf Life: 210 days
Globe Code: 12295775



Also in: 16oz

COFFEE MATE® LIQUID

Italian Sweet Crème

Pack Size: 6 units x 32 fl. oz.
Cases per pallet: 132
Shelf Life: 210 days
Globe Code: 12295767



COFFEE MATE® LIQUID

Sugar Free Italian Sweet Crème

Pack Size: 6 units x 32 fl. oz.
Cases per pallet: 132
Shelf Life: 210 days
Globe Code: 12322677



COFFEE MATE® LIQUID

Sugar Free Hazelnut

Pack Size: 6 units x 32 fl. oz.
Cases per pallet: 132
Shelf Life: 210 days
Globe Code: 12295769



Also in: 16oz

COFFEE MATE® LIQUID

Peppermint Mocha

Pack Size: 6 units x 32 fl. oz.
Cases per pallet: 132
Shelf Life: 180 days
Globe Code: 12295803



COFFEE MATE® LIQUID

Fat Free French Vanilla

Pack Size: 6 units x 32 fl. oz.
Cases per pallet: 132
Shelf Life: 210 days
Globe Code: 12295772





COFFEE MATE® LIQUID
Natural Bliss® Sweet Cream

Pack Size: 6 units x 16 fl. oz.
Cases per pallet: 204
Shelf Life: 180 days
Globe Code: 12295776



Also in: 32oz and 46oz



COFFEE MATE® LIQUID
Natural Bliss® Vanilla

Pack Size: 6 units x 16 fl. oz.
Cases per pallet: 204
Shelf Life: 180 days
Globe Code: 12295779



Also in: 32oz and 46oz



COFFEE MATE® LIQUID
Natural Bliss® Hazelnut All-Natural

Pack Size: 6 units x 16 fl. oz.
Cases per pallet: 204
Shelf Life: 180 days
Globe Code: 12476942



COFFEE MATE® LIQUID
Natural Bliss® Almond Vanilla

Pack Size: 6 units x 16 fl. oz.
Cases per pallet: 204
Shelf Life: 180 days
Globe Code: 12320033



Also in: 32oz



COFFEE MATE® LIQUID
Natural Bliss® Almond Caramel

Pack Size: 6 units x 32 fl. oz.
Cases per pallet: 204
Shelf Life: 180 days
Globe Code: 12482275



COFFEE MATE® LIQUID
Natural Bliss® Coconut Milk

Pack Size: 6 units x 32 fl. oz.
Cases per pallet: 204
Shelf Life: 180 days
Globe Code: 12342939



COFFEE MATE® LIQUID
Natural Bliss® Oat Milk Brown Sugar

Pack Size: 6 units x 32 fl. oz.
Cases per pallet: 204
Shelf Life: 180 days
Globe Code: 12463227



COFFEE MATE® LIQUID
Natural Bliss® Oat Milk Vanilla

Pack Size: 6 units x 16 fl. oz.
Cases per pallet: 204
Shelf Life: 180 days
Globe Code: 12482274



**COFFEE MATE® TUB**

The Original

Pack Size: 4 (24 x 0.375 fl. oz.)
 Cases per pallet: 240
 Shelf Life: 270 days
 Globe Code: 12158538



0 50000 34101 6

**COFFEE MATE® TUB**

French Vanilla

Pack Size: 4 (24 x 0.375 fl. oz.)
 Cases per pallet: 240
 Shelf Life: 270 days
 Globe Code: 12158600



0 50000 34102 3

**COFFEE MATE® TUB**

Hazelnut

Pack Size: 4 (24 x 0.375 fl. oz.)
 Cases per pallet: 240
 Shelf Life: 270 days
 Globe Code: 12158539



0 50000 34103 0

**COFFEE MATE® TUB**

Italian Sweet Crème

Pack Size: 4 (24 x 0.375 fl. oz.)
 Cases per pallet: 240
 Shelf Life: 270 days
 Globe Code: 12426576



0 50000 65227 3

Creamers Powder | Shelf Stable

**COFFEE MATE® POWDER**

The Original

Pack Size: 12 units x 16 oz.
 Cases per pallet: 70
 Shelf Life: 730 days
 Globe Code: 11000443



0 50000 30162 1

Also in: 6,11,
22,35.3oz

**COFFEE MATE® POWDER**

French Vanilla

Pack Size: 6 units x 15 oz.
 Cases per pallet: 180
 Shelf Life: 730 days
 Globe Code: 11001939



0 50000 20708 4

**COFFEE MATE® POWDER**

Hazelnut

Pack Size: 6 units x 15 oz.
 Cases per pallet: 180
 Shelf Life: 730 days
 Globe Code: 11001940



0 50000 31474 4

**COFFEE MATE® POWDER**

Chocolate Crème

Pack Size: 6 units x 15 oz.
 Cases per pallet: 180
 Shelf Life: 730 days
 Globe Code: 11001398



0 50000 04595 2



COFFEE MATE® POWDER

Caramel Latte

Pack Size: 6 units x 15 oz.
Cases per pallet: 180
Shelf Life: 730 days
Globe Code: 12139448



COFFEE MATE® POWDER

Sugar Free French Vanilla

Pack Size: 6 units x 10.2 oz.
Cases per pallet: 180
Shelf Life: 730 days
Globe Code: 11001898



COFFEE MATE® POWDER

Sugar Free Hazelnut

Pack Size: 6 units x 10.2 oz.
Cases per pallet: 180
Shelf Life: 730 days
Globe Code: 11001989



COFFEE MATE® POWDER

Sugar Free Vanilla Caramel

Pack Size: 6 units x 10.2 oz.
Cases per pallet: 180
Shelf Life: 730 days
Globe Code: 11001992



COFFEE MATE® POWDER

Sugar Free Chocolate

Pack Size: 6 units x 10.2 oz.
Cases per pallet: 180
Shelf Life: 730 days
Globe Code: 12175855



COFFEE MATE® POWDER

The Original Fat Free

Pack Size: 6 units x 16 oz.
Cases per pallet: 180
Shelf Life: 730 days
Globe Code: 12329324





NESCAFÉ® TASTER'S CHOICE®

House Blend Jar

Pack Size: 6 units x 7 oz.
Cases per pallet: 120
Shelf Life: 720 days
Globe Code: 12231157



Also in: 14 oz



NESCAFÉ® TASTER'S CHOICE®

French Roast Jar

Pack Size: 6 units x 7 oz.
Cases per pallet: 120
Shelf Life: 720 days
Globe Code: 12259967



NESCAFÉ® TASTER'S CHOICE®

Colombian Blend Jar

Pack Size: 4 units x 7 oz.
Cases per pallet: 180
Shelf Life: 720 days
Globe Code: 12344759



NESCAFÉ® TASTER'S CHOICE®

Decaf Jar

Pack Size: 6 units x 7 oz.
Cases per pallet: 120
Shelf Life: 720 days
Globe Code: 12230966



NESCAFÉ® TASTER'S CHOICE®

House Blend Sticks

Pack Size: 8 stick cases (18x0.106oz)US
Cases per pallet: 210
Shelf Life: 720 days
Globe Code: 12303970



NESCAFÉ® TASTER'S CHOICE®

French Roast Sticks

Pack Size: 12 stick cases (5x0.106oz)
Cases per pallet: 210
Shelf Life: 720 days
Globe Code: 12303919



NESCAFÉ® TASTER'S CHOICE®

Hazelnut Sticks

Pack Size: 8 stick cases (16x0.106oz)
Cases per pallet: 210
Shelf Life: 360 days
Globe Code: 12303971



NESCAFÉ® TASTER'S CHOICE®

Decaf Sticks

Pack Size: 8 stick cases (16x0.106oz)
Cases per pallet: 210
Shelf Life: 720 days
Globe Code: 12303918



READY-TO-DRINK

Convenience has been the usual key trend behind this category.

However, consumers moving toward **healthier** lifestyles and **responsible** consumption awareness have pushed brands to evolve in order to meet these needs

NESQUIK®

RTD wide portfolio reflect these trends
contributing to the category expansion



Beyond the morning or bedtime glass of milk, **NESQUIK®** has evolved to be part of consumers daily activities as a **SNACK, TREAT** or even a **RECOVERY OPTION** after a sports practice.

Increase of consumption occasions along with the category offerings will continue to drive growth

RTD Flavored Milks are driving this elevated consumption by appealing to 4 out of the 5 drivers of willingness to pay...



Taste



Nutrients



Ingredients



Trust



71%

of consumers are looking for products with more protein and **84%** want less sugar

Keeping up with key food trends, **NESQUIK®** has included these options to the portfolio offer

NESQUIK® PROTEIN POWER is available for consumers looking to build and repair tissues, or just craving for a more fulfilling snack. The brand is also expanding its portfolio to address non-dairy consumer needs with **PLANT BASE** options



Nesquik is the **#1** brand in single-serve with flavor variety to satisfy everyone's cravings!





Also in: 8oz

NESQUIK® READY TO DRINK Chocolate

Pack Size: 12 units x 14 fl. oz.
Cases per pallet: 140
Shelf Life: 180 days
Globe Code: 12263904



0 28000 77212 3



NESQUIK® READY TO DRINK Strawberry

Pack Size: 12 units x 14 fl. oz.
Cases per pallet: 140
Shelf Life: 180 days
Globe Code: 12251768



0 28000 51575 1



NESQUIK® READY TO DRINK Double Chocolate

Pack Size: 12 units x 14 fl. oz.
Cases per pallet: 140
Shelf Life: 180 days
Globe Code: 12263905



0 28000 89503 7



NESQUIK® READY TO DRINK Banana Strawberry

Pack Size: 12 units x 14 fl. oz.
Cases per pallet: 140
Shelf Life: 180 days
Globe Code: 12253854



0 28000 89504 4



NESQUIK® READY TO DRINK Vanilla

Pack Size: 12 units x 14 fl. oz.
Cases per pallet: 140
Shelf Life: 180 days
Globe Code: 12253855



0 28000 89625 6



NESQUIK® READY TO DRINK Dark Chocolate Whole Milk

Pack Size: 12 units x 14 fl. oz.
Cases per pallet: 140
Shelf Life: 180 days
Globe Code: 12451754



0 28000 68647 5



NESQUIK® READY TO DRINK Protein Power Strawberry

Pack Size: 12 units x 14 fl. oz.
Cases per pallet: 140
Shelf Life: 180 days
Globe Code: 12465823



0 28000 23175 0



NESQUIK® READY TO DRINK Protein Power Chocolate

Pack Size: 12 units x 14 fl. oz.
Cases per pallet: 140
Shelf Life: 180 days
Globe Code: 12432026



0 28000 27639 3

NESQUIK® READY TO DRINK Chocolate

Pack Size: 15 pack - 8 oz bottles
Cases per pallet: 140
Shelf Life: 180 days
Globe Code: 12263902



0 28000 78187 0

MILK MODIFIERS

The **milk modifiers** category provides consumers **nutritional** and **indulgent** options while creating meaningful connections with their loved ones

NESQUIK® is recognized as a leader brand

and it is mom's best ally

to ensure children get the nutritional benefits from milk in the most delicious way

Nestlé
Nesquik

NESQUIK® Offers a variety of formats including **POWDER**, **SYRUP**, & **BETTER-FOR-YOU** options



Powder



Syrup



No Sugar Added

Expanding occasions beyond the morning or bedtime glass of milk, is the category **biggest** growth opportunity



Hot Cocoa Mix



Iconic brands delivering delicious, unique taste for more than **70** years



Malted Milk



Hot Cocoa Mix Regular & Zero Sugar

Hot cocoa consumption significantly goes up during cold months and holidays.

The category volume increases by **[50%]** during fall and winter

Milk Modifiers, Syrup & Powder | Shelf Stable



NESQUIK® Syrup
Chocolate

Pack Size: 6 units x 22 fl. oz.
Cases per pallet: 170
Shelf Life: 540 days
Globe Code: 12323911



NESQUIK® Syrup
Strawberry

Pack Size: 6 units x 22 fl. oz.
Cases per pallet: 170
Shelf Life: 540 days
Globe Code: 12323910



NESQUIK® POWDER
Chocolate

Pack Size: 12 units x 20.1 oz.
Cases per pallet: 48
Shelf Life: 720 days
Globe Code: 12487724



Also in: 10, 14, 16, 38, and 44.9 oz



NESQUIK® POWDER
No Sugar Added Chocolate

Pack Size: 6 units x 16 oz.
Cases per pallet: 126
Shelf Life: 540 days
Globe Code: 12100823



NESQUIK® POWDER
Strawberry

Pack Size: 6 units x 18.7oz.
Cases per pallet: 126
Shelf Life: 720 days
Globe Code: 12431180



Also in: 9, 14, 18, 35, and 41.9 oz



NESQUIK® POWDER
Hot Fudge Sundae

Pack Size: 6 units x 18.5oz.
Cases per pallet: 126
Shelf Life: 720 days
Globe Code: 12432275



20 SKUs available

Milk Modifier, Powder, Malt | Shelf Stable



CARNATION®
Original Malted Milk

Pack Size: 6 units x 13 oz.
Cases per pallet: 180
Shelf life: 450 days
Globe Code: 12030012



CARNATION®
Chocolate Malted Milk Mix

Pack Size: 6 units x 13 oz.
Cases per pallet: 180
Shelf life: 450 days
Globe Code: 11008072



NESTLÉ® Hot Cocoa Mix Rich Milk Chocolate



Pack Size: 12 six packs (8X0.85oz)
Cases per pallet: 96
Shelf Life: 810 days
Globe Code: 12506328



NESTLÉ® Hot Cocoa Mix Rich Milk Chocolate

Pack Size: 6 units x 27.7 oz,
Cases per pallet: 80
Shelf Life: 810 days
Globe Code: 12343091



NESTLÉ® Hot Cocoa Mix Mini Marshmallows



Pack Size: 12 six packs (8X0.85oz)
Cases per pallet: 96
Shelf Life: 810 days
Globe Code: 12506326



NESTLÉ® Hot Cocoa Mix Fat Free Rich Milk Chocolate

Pack Size: 12 units x 7.33 oz.
Cases per pallet: 72
Shelf Life: 450 days
Globe Code: 12343029



NESTLÉ® Hot Cocoa Mix Zero Added Sugar Rich Milk Chocolate



Pack Size: 12 eight packs (8x0.28oz)
Cases per pallet: 96
Shelf Life: 450 days
Globe Code: 12343084



BAKING

NESTLÉ® baking brands have **inspired** consumers to share **love** with **family** and **friends** through their creations

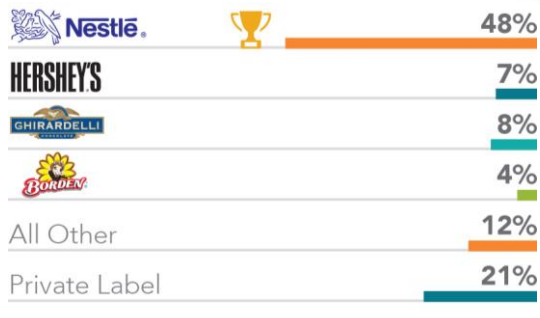


Total shelf stable baking and refrigerated cookie dough categories equal **\$3.6 billion**

in the US, NESTLÉ® commands shelf stable

with almost **50%** share across the

TOLL HOUSE, CARNATION and **LIBBY'S** brands



100% real chocolate

USA FAVORITE chocolate chip cookie

NO artificial flavors, colors or preservatives



Morsels



Edible



Cookie Dough



The **seasonality** component in this category is **significant**.

However, NESTLÉ® has shaped its portfolio in a way consumers can incorporate the baking range in **everyday cooking**, thus increasing category size and sales

100% pure pumpkin for cooking or baking

NO artificial flavors,

NO preservatives **JUST REAL PUMPKIN**

VERSATILE, rich, & creamy taste

Ideal for **cooking** and **baking**

Includes "GOOD FOR YOU" and **PLANT BASED** options



Original



Low Fat



Sweet Condensed



Original



Organic

TOLL HOUSE®**Semi-Sweet Choco. Chip Morsels**

Pack Size: 24 units x 12 oz.
Cases per pallet: 90
Shelf Life: 720 days
Globe Code: 11000329



Also in: 12,24,36, and 72 oz.



0 28000 21580 4

TOLL HOUSE®**Premier White Morsels**

Pack Size: 24 units x 12 oz.
Cases per pallet: 68
Shelf Life: 450 days
Globe Code: 11007316



Also in: 12 and 24oz.



0 28000 21010 6

TOLL HOUSE®**Butterscotch Morsels**

Pack Size: 12 units x 11 oz.
Cases per pallet: 176
Shelf Life: 450 days
Globe Code: 11002853



0 28000 21730 3

TOLL HOUSE®**Milk Chocolate Chip Morsels**

Pack Size: 12 units x 11.5 oz.
Cases per pallet: 136
Shelf Life: 480 days
Globe Code: 12366388



0 28000 21760 0

Also in: 11,23, and 57oz.

TOLL HOUSE®**Semi-Sweet Choco. Chip Mini Morsels**

Pack Size: 24 units x 10 oz.
Cases per pallet: 85
Shelf Life: 720 days
Globe Code: 12333433



Also in: 20oz.



0 28000 98612 4

TOLL HOUSE®**Dark Choco. Chip Morsels**

Pack Size: 12 units x 10 oz.
Cases per pallet: 200
Shelf Life: 540 days
Globe Code: 12137202



Also in: 20oz.



0 28000 03327 9

TOLL HOUSE®**Espresso Morsels**

Pack Size: 24 units x 9 oz.
Cases per pallet: 85
Shelf Life: 270 days
Globe Code: 12401824



0 28000 71465 9

TOLL HOUSE®**Funfetti Morsels**

Pack Size: 12 units x 9 oz.
Cases per pallet: 85
Shelf Life: 360 days
Globe Code: 12446083



0 28000 20557 7



TOLL HOUSE®

Chocolate Chip

Pack Size: 12 units x 16.5 oz.
Cases per pallet: 144
Shelf Life: 120 days
Globe Code: 12047675



TOLL HOUSE®

Ultimate Chocolate Chip Lovers

Pack Size: 12 units x 16 oz.
Cases per pallet: 144
Shelf Life: 120 days
Globe Code: 12226695



TOLL HOUSE®

Mini Chocolate Chip

Pack Size: 12 units x 16.5 oz.
Cases per pallet: 144
Shelf Life: 120 days
Globe Code: 12047935



TOLL HOUSE®

Peanut Butter Chocolate Chip

Pack Size: 12 units x 16 oz.
Cases per pallet: 144
Shelf Life: 120 days
Globe Code: 12107689



TOLL HOUSE®

White Chip Macadamia Nut

Pack Size: 12 units x 16 oz.
Cases per pallet: 144
Shelf Life: 120 days
Globe Code: 12192227



TOLL HOUSE®

Sugar

Pack Size: 24 units x 16.5 oz.
Cases per pallet: 144
Shelf Life: 120 days
Globe Code: 12057757



TOLL HOUSE®

Holiday Chocolate Chip

Pack Size: 12 units x 16 oz.
Cases per pallet: 144
Shelf Life: 120 days
Globe Code: 12370367



TOLL HOUSE®

Valentine Chocolate Chip Heart

Pack Size: 12 units x 16 oz.
Cases per pallet: 144
Shelf Life: 120 days
Globe Code: 12323170



Cookie Dough Tubs and Chubs | Chilled


TOLL HOUSE®
 Chocolate Chip Tub

Pack Size: 6 units x 36 oz.
Cases per pallet: 80
Shelf Life: 120 days
Globe Code: 12294145


TOLL HOUSE®
 Chocolate Chip Chub

Pack Size: 12 units x 30 oz.
Cases per pallet: 126
Shelf Life: 120 days
Globe Code: 12036337



16 SKUs available

Edible Cookie Dough | Chilled


TOLL HOUSE®
 Chocolate Chip

Pack Size: 4 units x 15 oz.
Cases per pallet: 200
Shelf Life: 120 days
Globe Code: 12475670


TOLL HOUSE®
 Peanut Butter Chocolate Chip

Pack Size: 4 units x 15 oz.
Cases per pallet: 90
Shelf Life: 120 days
Globe Code: 12378490


TOLL HOUSE®
 Chocolate Chip

Pack Size: 4 units x 15 oz.
Cases per pallet: 200
Shelf Life: 120 days
Globe Code: 12475670


TOLL HOUSE®
 Edible Bite-Sized Chocolate Chip

Pack Size: 6 units x 8 oz.
Cases per pallet: 100
Shelf Life: 120 days
Globe Code: 12449606


TOLL HOUSE®
 Edible Bite-Sized Cookies & Cream

Pack Size: 6 units x 8 oz.
Cases per pallet: 100
Shelf Life: 120 days
Globe Code: 12433653



4 SKUs available

Pumpkin Pure | Shelf stable



LIBBY'S®

100% Pure Canned Pumpkin Puree

Pack Size: 24 units x 15 oz.
Cases per pallet: 80
Shelf Life: 720 days
Globe Code: 12299462



LIBBY'S®

100% Pure Canned Pumpkin Puree

Pack Size: 12 units x 29 oz.
Cases per pallet: 80
Shelf Life: 720 days
Globe Code: 12299462



LIBBY'S®

Pumpkin Pie Mix

Pack Size: 12 units x 30 oz.
Cases per pallet: 100
Shelf Life: 720 days
Globe Code: 12310864



LIBBY'S®

100% Pure Organic Pumpkin Puree

Pack Size: 12 units x 15 oz.
Cases per pallet: 150
Shelf Life: 720 days
Globe Code: 12318161



4 SKUs available

Baking Milks | Shelf stable



CARNATION®

Evaporated Milk

Pack Size: 24 units x 12 fl. oz.
Cases per pallet: 96
Shelf life: 450 days
Globe Code: 11000324



Also in: 17oz. (tetra), 5oz.



CARNATION®

Evaporated Low Fat Milk

Pack Size: 24 units x 12 fl. oz.
Cases per pallet: 96
Shelf life: 365 days
Globe Code: 11000336



CARNATION®

Sweet Condensed Milk

Pack Size: 24 units x 14 fl. oz.
Cases per pallet: 96
Shelf life: 540 days
Globe Code: 12436154



CARNATION®

Evaporated Fat Free Milk

Pack Size: 24 units x 12 fl. oz.
Cases per pallet: 96
Shelf life: 275 days
Globe Code: 11000326



FROZEN MEALS



Frozen Prepared Meals
a big deal in the U.S.

The category value equals to
\$7.24 billion with **2.5%** YoY growth



Frozen meals are
forecasted to outpace
average dinner eating's
growth through 2022:

Frozen Multi-Serve **+9%**
Frozen Single Serve **+8%**

NESTLÉ® offers several frozen
prepared meals options for
everyday consumers



STOUFFERS® the brand
known as the selling **#1** frozen
Mc & Cheese and lasagna brand in the US



Single and multi serve
options for the whole family
same as protein
packed options under Fit Kitchen



Family Size Multi-Serve



Large Size Multi-Serve

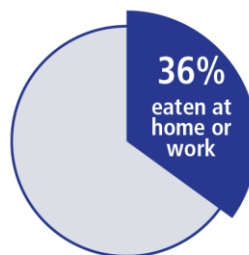


Single-Serve

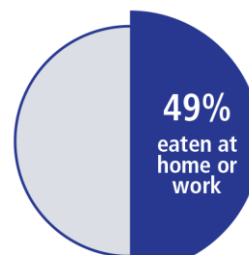


Fit Kitchen Single serve bowls

OOH Lunch Purchases



OOH Lunch Purchases



In the US, **Out of Home** is often **eaten at home** which makes it an opportunity to bring consumers to the category

Within the healthy segment, **LEAN CUISINE®** provides solutions for those habitual
calorie conscious consumers offering

ORGANIC, NON-GMO, VEGETARIAN and **GLUTEN-FREE** options

LEAN CUISINE® as the **#1** brand
purchased by nutritional category users



Single serve



Single-Serve bowls





Also in: 40, 76 or 90oz

STOUFFER'S® Macaroni + Cheese

Pack Size: 12 units x 12 oz.
Cases per Pallet: 110
Shelf-Life: 720 days
Globe Code: 11000263



Also in: 16 or 33oz

STOUFFER'S® Meatloaf

Pack Size: 12 units x 9.875 oz.
Units per Case: 12
Shelf-Life: 300 days
Globe Code: 11005192



Also in: 18, 38, 57 or 90oz

STOUFFER'S® Lasagna

Pack Size: 12 units x 10.5 oz.
Cases per Pallet: 110
Shelf-Life: 720 days
Globe Code: 11007499



STOUFFER'S® Spaghetti with Meat & Sauce

Pack Size: 12 units x 12 oz.
Cases per Pallet: 90
Shelf-Life: 360 days
Globe Code: 11005203



Also in: 28oz

STOUFFER'S® Salisbury Steak

Pack Size: 12 units x 9.625 oz.
Cases per Pallet: 90
Shelf-Life: 540 days
Globe Code: 11005194



STOUFFER'S® Creamed Chipped Beef

Pack Size: 12 units x 11 oz.
Cases per Pallet: 108
Shelf-Life: 300 days
Globe Code: 11003666



Also in: 32oz

STOUFFER'S® Stuffed Green Peppers

Pack Size: 12 units x 15.5 oz.
Cases per Pallet: 66
Shelf-Life: 720 days
Globe Code: 11003639



Also in: 15oz

STOUFFER'S® Chicken Fettuccini Alfredo

Pack Size: 12 units x 10.5 oz.
Cases per Pallet: 90
Shelf-Life: 360 days
Globe Code: 11005190



**STOUFFER'S®**

Roast Turkey

Pack Size: 12 units x 9.625 oz.
Units per Case: 12
Shelf life: 360 days
Globe Code: 11005187

**STOUFFER'S®**

Spaghetti with Meatballs

Pack Size: 12 units x 12.625 oz.
Cases per Pallet: 90
Shelf life: 360 days
Globe Code: 11005205

**STOUFFER'S®**

Vegetable Lasagna

Pack Size: 12 units x 10.5 oz.
Cases per Pallet: 36
Shelf-Life: 420 days
Globe Code: 12098766



Also in: 96oz

**STOUFFER'S®**

Swedish Meatballs

Pack Size: 12 units x 11.5 oz.
Cases per Pallet: 36
Shelf-Life: 720 days
Globe Code: 11005201



100 SKUs available

Prepared Meals, French Bread Pizza | Frozen

**STOUFFER'S®**

Peperoni Pizza

Pack Size: 11 units x 11.25 oz.
Cases per Pallet: 65
Shelf-Life: 270 days
Globe Code: 12123788

**STOUFFER'S®**

Deluxe Pizza

Pack Size: 10 units x 12.375 oz.
Cases per Pallet: 65
Shelf-Life: 270 days
Globe Code: 12123791

**STOUFFER'S®**

Extra Cheese Pizza

Pack Size: 10 units x 11.75 oz.
Cases per Pallet: 65
Shelf-Life: 270 days
Globe Code: 12123801

**STOUFFER'S®**

Three Meat Pizza

Pack Size: 10 units x 12.5 oz.
Cases per Pallet: 65
Shelf-Life: 180 days
Globe Code: 12123779



6 SKUs available



LEAN CUISINE®
Vermont White Cheddar
Mac & Cheese

Pack Size: 12 units x 8 oz.
Cases per Pallet: 99
Shelf-Life: 360 days
Globe Code: 12258765



LEAN CUISINE®
Meatloaf with Mashed
Potatoes

Pack Size: 12 units x 9.37 oz.
Cases per Pallet: 90
Shelf-Life: 360 days
Globe Code: 11005137



LEAN CUISINE®
Sesame Chicken
with Pasta & Vegetables

Pack Size: 12 units x 9 oz.
Cases per Pallet: 90
Shelf-Life: 540 days
Globe Code: 11005180



LEAN CUISINE®
Spaghetti with Meat
Sauce

Pack Size: 12 units x 11.05 oz.
Cases per Pallet: 90
Shelf-Life: 420 days
Globe Code: 11005131



LEAN CUISINE®
Roasted Turkey Breast
& Cinnamon Apples

Pack Size: 12 units x 9.75 oz.
Cases per Pallet: 90
Shelf-Life: 360 days
Globe Code: 11005133



LEAN CUISINE®
Chicken Parmesan with
spaghetti in tomato basil sauce.

Pack Size: 12 units x 10.8 oz.
Cases per Pallet: 90
Shelf-Life: 360 days
Globe Code: 12074978



LEAN CUISINE®
Alfredo Pasta with Chicken &
Broccoli

Pack Size: 12 units x 10 oz.
Cases per Pallet: 90
Shelf-Life: 480 days
Globe Code: 11005167



LEAN CUISINE®
Swedish Meatballs with pasta
in a savory gravy.

Pack Size: 12 units x 9.12 oz.
Cases per Pallet: 90
Shelf-Life: 360 days
Globe Code: 11005171



FROZEN SNACKS

HOT POCKETS® is the **#1** share leader in a **\$5.3Bn** category of Frozen snacks in the US

60% of frozen pizza trips among consumers include a frozen snack

HOT POCKETS® is the **leader** in terms of brand equity

30% of consumers buy a snack **1x** per week

HOT POCKETS® is driving category growth **[4% vs 2% in 2019]**

Over **12 million** Americans consumed **5 PACKS** of HOT POCKETS® or more per month in 2019



The way snack foods are being consumed
is changing.

As grazing becomes more popular, frozen snacks are increasingly being eaten as a meal replacement or at least part of one

Quick Serve **restaurants** increased their sales by offering snacks as a **low-cost meal solution**

Attracting consumers to consider frozen snacks as a meal occasion represents an opportunity for retailers to **grow the category**

There are **50 varieties** of the traditional Hot Pocket, including breakfast, lunch, and dinner with high protein options. LEAN POCKETS® targets consumers looking for

“BETTER-FOR-YOU ALTERNATIVES”



Original



Breakfast



Also in: 4.5oz x 22.5oz.

Available in 2 ct, 5 ct, 12 ct, and 20 ct

HOT POCKETS® Pepperoni Pizza

Pack Size: 8 units x 9 oz.
Cases per pallet: 126
Shelf Life: 420 days
Globe Code: 11007640



Also in: 4.5oz x 22.5oz.

Available in 2 ct, 5 ct, 12 ct and 20 ct

HOT POCKETS® Ham & Cheese

Pack Size: 8 units x 9 oz.
Cases per pallet: 126
Shelf Life: 420 days
Globe Code: 11007647



Also in: 54oz.

Available in 2 ct, 5 ct, and 12 ct

HOT POCKETS® Crispy Crust Pepperoni Pizza

Pack Size: 8 units x 9 oz.
Cases per pallet: 126
Shelf Life: 420 days
Globe Code: 11007666



Also in: 22.5oz., 54oz.

Available in 2 ct, 5 ct, and 12 ct

HOT POCKETS® Philly Steak & Cheese

Pack Size: 8 units x 9 oz.
Cases per pallet: 126
Shelf Life: 420 days
Globe Code: 11007639



Also in: 51oz.

Available in 2 ct and 5 ct

HOT POCKETS® 4 Meat 4 Cheese

Pack Size: 8 units x 9 oz.
Cases per pallet: 126
Shelf Life: 420 days
Globe Code: 11007648



HOT POCKETS® Pepperoni & Sausage Pizza

Pack Size: 8 units x 8.5 oz.
Cases per pallet: 126
Shelf Life: 420 days
Globe Code: 12409727



Also in: 22.5oz.

Available in 2 ct, 5 ct, and 12 ct

HOT POCKETS® Meatball with Mozzarella

Pack Size: 8 units x 9 oz.
Cases per pallet: 126
Shelf Life: 420 days
Globe Code: 11007642



HOT POCKETS® Four Cheese Pizza

Pack Size: 8 units x 8.5 oz.
Cases per pallet: 126
Shelf Life: 420 days
Globe Code: 12405539



Also in: 51oz., 21.25oz.

Available in 2 ct and 5 ct



FROZEN PIZZA

» The US Pizza Industry
is valued at **\$48 billion**, with frozen pizza
representing **\$5.6 billion [11%]**.

Carry Out / Delivery is a
\$27 billion

industry and the main competitor
to Frozen Pizza.

Pizza represents **9%** of all
US eating occasions with usage spiking
during key sporting events and
celebratory holidays



At nearly **5x** the size of
Frozen Pizza,
there is a large growth opportunity for
retailers that can successfully convert
consumers from Delivery.

In the US, a

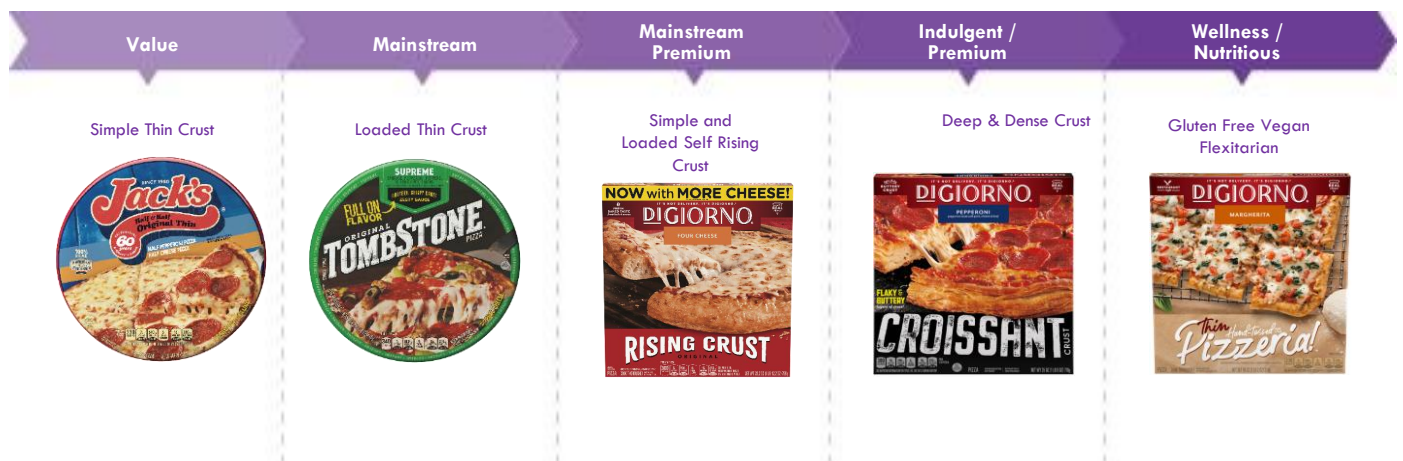
\$550 million

opportunity exists if Frozen Pizza can
convert just **1** Delivery purchase per
household annually.

DiGiorno® has the **#1** dollar share
in the Category and leads across
all key consumer metrics such as
“**Brand Awareness**” and “**Preferred Brand**”.

Retailers can only be successful at
stealing **Delivery** occasions if they
have the right brands and products
that deliver authentic **American-
Style Pizza** – like DiGiorno®.

The NESTLÉ® pizza portfolio spans all critical price tiers and palette preferences by offering a **variety of crusts, toppings**
and **dietary preferences**. We offer a convenient and high-quality meal solution for every household's pizza needs.



DIGIORNO® RISING CRUST Pepperoni



Pack Size: 12 units x 27.5 oz.
Cases per pallet: 48
Shelf Life: 240 days
Globe Code: 12418157



0 71921 96239 5

DIGIORNO® RISING CRUST Supreme



Pack Size: 12 units x 31.5 oz.
Cases per pallet: 48
Shelf Life: 240 days
Globe Code: 12499717



0 71921 94947 1

DIGIORNO® RISING CRUST 3 meat



Pack Size: 12 units x 29.8 oz.
Cases per pallet: 48
Shelf Life: 240 days
Globe Code: 12418154



0 71921 80560 9

DIGIORNO® RISING CRUST Four Cheese



Pack Size: 12 units x 28.2 oz.
Cases per pallet: 48
Shelf Life: 240 days
Globe Code: 12418155



0 71921 00338 8

DIGIORNO® CHEESE STUFFED CRUST Pepperoni



Pack Size: 12 units x 22.2 oz.
Cases per pallet: 42
Shelf Life: 240 days
Globe Code: 12408043



0 71921 01669 2

DIGIORNO® CHEESE STUFFED CRUST 3 meat



Pack Size: 12 units x 24.5 oz.
Cases per pallet: 42
Shelf Life: 240 days
Globe Code: 12408052



0 71921 74374 1

DIGIORNO® CHEESE STUFFED CRUST Supreme



Pack Size: 12 units x 26.4 oz.
Cases per pallet: 42
Shelf Life: 240 days
Globe Code: 12408042



0 71921 82588 1

DIGIORNO® CHEESE STUFFED CRUST 5 Cheese



Pack Size: 12 units x 22.2 oz.
Cases per pallet: 42
Shelf Life: 240 days
Globe Code: 12408045



0 71921 20616 1

DIGIORNO® PAN PIZZA Pepperoni



Pack Size: 8 units x 26 oz.
Cases per pallet: 42
Shelf Life: 240 days
Globe Code: 12418142



DIGIORNO® PAN PIZZA Three Meat



Pack Size: 8 units x 28.3 oz.
Cases per pallet: 42
Shelf Life: 240 days
Globe Code: 12417964



DIGIORNO® PAN PIZZA Pepperoni



Pack Size: 8 units x 26.6 oz.
Cases per pallet: 42
Shelf Life: 240 days
Globe Code: 12418140



DIGIORNO® PAN PIZZA Croissant Crust Pepperoni



Pack Size: 8 units x 25 oz.
Cases per pallet: 48
Shelf Life: 240 days
Globe Code: 12377538



DIGIORNO® PIZZERIA! Thin Hand-Tossed Crust Margherita



Pack Size: 12 units x 18 oz.
Cases per pallet: 48
Shelf Life: 240 days
Globe Code: 12418246



DIGIORNO® Hand-Tossed Pepperoni



Pack Size: 12 units x 18.7 oz.
Cases per pallet: 48
Shelf Life: 240 days
Globe Code: 12460981



DIGIORNO® Hand-Tossed Supreme



Pack Size: 12 units x 12.3 oz.
Cases per pallet: 48
Shelf Life: 240 days
Globe Code: 12460982



DIGIORNO® Hand-Tossed Four Cheese



Pack Size: 12 units x 18.2 oz.
Cases per pallet: 48
Shelf Life: 240 days
Globe Code: 12460984





JACK'S® THIN CRUST Pepperoni

Pack Size: 12 units x 14.3 oz.
Cases per pallet: 84
Shelf Life: 240 days
Globe Code: 12422049



JACK'S® THIN CRUST Sausage & Pepperoni

Pack Size: 12 units x 15 oz.
Cases per pallet: 72
Shelf Life: 240 days
Globe Code: 12422062



JACK'S® THIN CRUST Supreme

Pack Size: 12 units x 15.8 oz.
Cases per pallet: 72
Shelf Life: 240 days
Globe Code: 12422064



JACK'S® THIN CRUST Cheese

Pack Size: 12 units x 13.8 oz.
Cases per pallet: 84
Shelf Life: 240 days
Globe Code: 12422063



JACK'S® THIN CRUST Bacon Cheeseburger

Pack Size: 12 units x 15 oz.
Cases per pallet: 72
Shelf Life: 240 days
Globe Code: 12445789



JACK'S® THIN CRUST Sausage

Pack Size: 12 units x 14.9 oz.
Cases per pallet: 72
Shelf Life: 240 days
Globe Code: 12422082



JACK'S® THIN CRUST Canadian Bacon

Pack Size: 12 units x 14.9 oz.
Cases per pallet: 84
Shelf Life: 240 days
Globe Code: 12445820



JACK'S® THIN CRUST Mexican Style

Pack Size: 12 units x 15.3 oz.
Cases per pallet: 60
Shelf Life: 240 days
Globe Code: 12445822



JACK'S® RISING CRUST Pepperoni

Pack Size: 12 units x 26.3 oz.
Cases per pallet: 72
Shelf Life: 240 days
Globe Code: 12422090



JACK'S® THIN CRUST Half & Half Pepperoni & Cheese

Pack Size: 12 units x 14.6 oz.
Cases per pallet: 84
Shelf Life: 240 days
Globe Code: 12422080



TOMBSTONE® ORIGINAL Pepperoni



Pack Size: 12 units x 19.3 oz.
Cases per pallet: 72
Shelf Life: 240 days
Globe Code: 12422035



0 71921 97185 4

TOMBSTONE® ORIGINAL Four Meat



Pack Size: 12 units x 21.1 oz.
Cases per pallet: 66
Shelf Life: 240 days
Globe Code: 12422037



0 71921 62052 3

TOMBSTONE® ORIGINAL Pepperoni & Sausage



Pack Size: 12 units x 19.4 oz.
Cases per pallet: 66
Shelf Life: 240 days
Globe Code: 12422057



0 71921 17118 6

TOMBSTONE® ORIGINAL Classic Sausage



Pack Size: 12 units x 20.9 oz.
Cases per pallet: 66
Shelf Life: 240 days
Globe Code: 12422067



0 71921 49079 9

TOMBSTONE® ORIGINAL Canadian Bacon



Pack Size: 12 units x 19.6 oz.
Cases per pallet: 72
Shelf Life: 240 days
Globe Code: 12422036



0 71921 29988 0

TOMBSTONE® ORIGINAL Deluxe



Pack Size: 12 units x 21.6 oz.
Cases per pallet: 66
Shelf Life: 240 days
Globe Code: 12422046



0 71921 75703 8

TOMBSTONE® BRICK OVEN STYLE Pepperoni



Pack Size: 12 units x 17 oz.
Cases per pallet: 84
Shelf Life: 240 days
Globe Code: 12422061



0 71921 70282 3

TOMBSTONE® GARLIC BREAD Pepperoni



Pack Size: 12 units x 27 oz.
Cases per pallet: 54
Shelf Life: 240 days
Globe Code: 12422059



0 71921 14208 7




Nestlé
PROFESSIONAL.
INTERNATIONAL CATALOG
2022



OTHERS CAN, **WE
CAN BETTER**

Chef-mate



CHEF-MATE gravies, cheese sauces and chili products are **Cooked Before Canning**, a process that ensures exceptional, scratch-like taste, texture and color in every can. There is **no “metallic” after taste** to lessen the quality and great taste of your creation

Ready-to-Eat from the can
without additional preparation

Labor savings: Simple
open, heat and serve

CHEF-MATE
Provide these
BENEFITS

8-hour steam table
holding

18-month shelf
stability

Mexican food is found on nearly a **quarter of all restaurant menus**. Our white cheese sauce lends a mouthwatering richness to the zest inherent in this popular and growing cuisine



Mac and cheese has provided **comfort** to kids and adults for decades. Today, it's showing growth on all types of menus from **quick-service** to **fine dining**



CHEF MATE®

Basic Cheddar Cheese

Pack Size: 6 units x 106 oz.
Cases per pallet: 56
Shelf Life: 548 days
Globe Code: 11000364



CHEF MATE®

Hot Dog Chili

Pack Size: 6 units x 108 oz.
Cases per pallet: 56
Shelf Life: 548 days
Globe Code: 11002732



CHEF MATE®

Sharp Cheddar Cheese Sauce

Pack Size: 6 units x 106 oz.
Cases per pallet: 56
Shelf Life: 548 days
Globe Code: 11002734



CHEF MATE®

Golden Cheese Sauce

Pack Size: 6 units x 106 oz.
Cases per pallet: 56
Shelf Life: 365 days
Globe Code: 11002736



CHEF MATE®

QUE BUENO Nacho Cheese Sauce

Pack Size: 6 units x 106 oz.
Cases per pallet: 56
Shelf Life: 548 days
Globe Code: 12043277



GLOBAL BASES, GRAVY, AND SEASONINGS



Culinary bases, sauces, gravies, and concentrates made to **infuse** our customers' menus with **elevated taste** and **flavor**



Premium Versatile Menu Flavors for Chefs!

TESTED
READY-TO-EAT



TRIO

Consistent
& Delicious

Get
Creative
with the
TRIO
Gravy!
»»



TASTE. TRUST. SERVE



»» **#1** most frequently purchased food brand in the world!

»» A **fresh** way to **enhance** the flavors in your favorite dishes





MINOR'S BOURBON STYLE Sauce - Ready-to-use

Pack Size: 4 units x 0.5 gallons
Cases per pallet: 72
Shelf Life: 390 Days
Globe Code: 11001244



MINOR'S BEEF AU JUS Concentrate

Pack Size: 6 units x 1LB
Cases per pallet: 260
Shelf Life: 365 Days
Globe Code: 11003057



MINOR'S LOW SODIUM Chicken base

Pack Size: 6 units x 1LB
Cases per pallet: 260
Shelf Life: 365 days
Globe Code: 11003078



MINOR'S CHIPOTLE FLAVOR Concentrate Gluten Free

Pack Size: 5 units x 14.4oz
Cases per pallet: 260
Shelf Life: 275 days
Globe Code: 11003109



MINOR'S SAUTÉED VEGETABLE Base (mirepoix)

Pack Size: 6 units x 1LB
Cases per pallet: 260
Shelf Life: 365 days
Globe Code: 11003276



MINOR'S CRAB BASE No Added MSG Gluten Free

Pack Size: 6 units x 1LB
Cases per pallet: 260
Shelf Life: 275 days
Globe Code: 11003327



MINOR'S BEEF BASE No added MSG

Pack Size: 6 units x 1LB
Cases per pallet: 260
Shelf Life: 365 days
Globe Code: 11003334



MINOR'S BEEF BASE No added MSG

Pack Size: 12 units x 1LB
Cases per pallet: 130
Shelf Life: 365 days
Globe Code: 11003341



**MINOR'S LOW SODIUM BEEF BASE**

Gluten Free No Added MSG

Pack Size: 6 units x 1LB
Cases per pallet: 260
Shelf Life: 365 days
Globe Code: 11003343

**MINOR'S BEEF BASE**

No added MSG

Pack Size: 4 units x 5LB
Cases per pallet: 96
Shelf Life: 365 days
Globe Code: 11003354

**MINOR'S CHICKEN BASE**

No added MSG

Pack Size: 12 units x 1LB
Cases per pallet: 130
Shelf Life: 365 days
Globe Code: 11003367

**MINOR'S CHICKEN BASE**

No added MSG

Pack Size: 4 units x 5LB
Cases per pallet: 96
Shelf Life: 365 days
Globe Code: 11003369

**MINOR'S CHICKEN BASE**

No added MSG

Pack Size: 6 units x 1LB
Cases per pallet: 260
Shelf Life: 365 days
Globe Code: 11003371

**MINOR'S CHICKEN BASE**

Pack Size: 12 units x 1LB
Cases per pallet: 130
Shelf Life: 365 days
Globe Code: 11003373

**MINOR'S LOBSTER BASE**

Gluten Free -No added MSG

Pack Size: 6 units x 1LB
Cases per pallet: 260
Shelf Life: 275 days
Globe Code: 11003461

**MINOR'S SHRIMP BASE**

No added MSG

Pack Size: 6 units x 1LB
Cases per pallet: 260
Shelf Life: 275 days
Globe Code: 11003464





MINOR'S CHICKEN BASE

Gluten Free

Pack Size: 6 units x 1LB
Cases per pallet: 260
Shelf Life: 365 days
Globe Code: 12072948



MINOR'S AU JUS PREP

Pack Size: 12 units x 1 Pint
Cases per pallet: 96
Shelf Life: 365 days
Globe Code: 12313814



TRIO BROWN

Gravy Mix

Pack Size: 8 units x 13.37oz
Cases per pallet: 144
Shelf Life: 720 days
Globe Code: 12056355



MAGGI SEASONING

Pack Size: 6 units x 27oz
Cases per pallet: 80
Shelf Life: 720 days
Globe Code: 9123272



COFFEE CREAMERS & SOLUBLE COFFEE

Only **Coffee Mate** gives you so many **formats** and **flavors** to meet your unique operational needs. Self-Serve or behind the counter, it's the creamer brand consumers trust to **customize** their hot and cold beverages



74% of consumers say **Coffee Mate** is their **favorite** flavored creamer brand

81%

are more likely to **buy** **coffee** from their workplace cafeteria if a selection of **Coffee Mate** creamers is **available**



26% of people prefer their coffee black **away from home**, while **40%** add sweetener, and **64%** add creamer

30% of **specialty coffee** is consumed **away from home**. Attract customers with espressos, lattes, cappuccinos, mochas, and other coffeehouse-style beverages

Stir up more **efficiency** with pumps!



100% **pure-premium** coffee made in an instant without brewing.
Versatile ingredient for on-trend beverage and culinary applications



This affordable choice **reduces** **waste** while giving your guests a delicious way to treat themselves to a sweet and creamy cup of coffee



With our **convenient** liquid creamer **singles**, a variety of tempting flavors are ready to transform any cop of coffee **anywhere**


COFFEE MATE® LIQUID
 French Vanilla

Pack Size: 2 units x 1.5L
Cases per pallet: 160
Shelf Life: 270 days
Globe Code: 12039864


COFFEE MATE® LIQUID
 Hazelnut

Pack Size: 2 units x 1.5L
Cases per pallet: 160
Shelf Life: 270 days
Globe Code: 12039865


COFFEE MATE® LIQUID
 Sweetened Original

Pack Size: 2 units x 1.5L
Cases per pallet: 160
Shelf Life: 270 days
Globe Code: 12039938


COFFEE MATE® LIQUID
 Salted Caramel

Pack Size: 2 units x 1.5L
Cases per pallet: 160
Shelf Life: 270 days
Globe Code: 12323367


COFFEE MATE® LIQUID
 Sweetened Original

Pack Size: 180 units x 0.375 oz.
Cases per pallet: 140
Shelf Life: 270 days
Globe Code: 11000375



*Available in 200 and 360 count as well


COFFEE MATE® LIQUID
 French Vanilla

Pack Size: 200 units x 0.375 oz.
Cases per pallet: 130
Shelf Life: 270 days
Globe Code: 11001206


COFFEE MATE® LIQUID
 Hazelnut

Pack Size: 200 units x 0.375 oz.
Cases per pallet: 130
Shelf Life: 270 days
Globe Code: 11001207


COFFEE MATE® LIQUID
 Italian Sweet Creme

Pack Size: 200 units x 0.375 oz.
Cases per pallet: 130
Shelf Life: 270 days
Globe Code: 12220663



COFFEE MATE® LIQUID

Café Mocha



Pack Size: 200 units x 0.375 oz.
Cases per pallet: 130
Shelf Life: 270 days
Globe Code: 11002807



COFFEE MATE® LIQUID

Irish Cream



Pack Size: 200 units x 0.375 oz.
Cases per pallet: 130
Shelf Life: 270 days
Globe Code: 11002803



COFFEE MATE® POWDERED

French Vanilla



Pack Size: 12 units x 15 oz.
Cases per pallet: 90
Shelf Life: 730 days
Globe Code: 12036068



COFFEE MATE® POWDERED

Hazelnut



Pack Size: 12 units x 15 oz.
Cases per pallet: 90
Shelf Life: 730
Globe Code: 12036807



COFFEE MATE® POWDERED

Original Sachet



Pack Size: 1000 units x 3 grams.
Cases per pallet: 104
Shelf Life: 730 days
Globe Code: 11000369





NESCAFE TASTER'S CHOICE®

House Blend Stick

Pack Size: 480 units x 1.87 grams
Cases per pallet: 90
Shelf Life: 730 days
Globe Code: 11005773



COFFEE MATE® POWDERED

Decaf Stick

Pack Size: 480 units x 1.87 grams.
Cases per pallet: 90
Shelf Life: 730 days
Globe Code: 11005994



FROZEN MEALS AND FROZEN SNACKS



STOCK THE PERFECT
READY-TO-HEAT SNACKS

#1 Top handheld brand in food service and vending.



GET COOKIN'!



+94% consumer brand recognition.



Quality meats, **real** cheese and **no artificial** flavors.



Restaurants with drive-thrus now use them for 85% of their sales



Quality Choices you **CAN** depend on!

Versatile products allow you to use one item in **multiple menu applications**



Good food, Good life

STOUFFER'S

Chicken Parmesan



Pack Size: 4 units x 62 oz.
Cases per pallet: 112
Shelf Life: 720 days
Globe Code: 11000344



0 13800 30179 6

STOUFFER'S

Chicken Fettuccine



Pack Size: 4 Units x 73 oz.
Cases per pallet: 112
Shelf Life: 720 days
Globe Code: 11003888



0 13800 31120 7

STOUFFER'S

Lasagna with Meat Sauce



Pack Size: 4 units x 96 oz.
Cases per pallet: 110
Shelf Life: 360 days
Globe Code: 11000346



0 13800 30321 9

STOUFFER'S

Scalloped Potatoes



Pack Size: 4 units x 72 oz.
Cases per pallet: 112
Shelf Life: 540 days
Globe Code: 11000352



0 13800 30486 5

STOUFFER'S

Macaroni & Beef with Tomatoes



Pack Size: 4 units x 76 oz.
Cases per pallet: 112
Shelf Life: 360 days
Globe Code: 11000348



0 13800 30330 1

STOUFFER'S

Broccoli Cheese Rice Casserole



Pack Size: 4 units x 94 oz.
Cases per pallet: 91
Shelf Life: 360 days
Globe Code: 11003881



0 13800 30615 9

STOUFFER'S

Traditional Macaroni & Cheese



Pack Size: 4 units x 76 oz.
Cases per pallet: 112
Shelf Life: 720 days
Globe Code: 11000349



0 13800 30340 0

STOUFFER'S

Escalloped Chicken & Noodles



Pack Size: 4 units x 76 oz.
Cases per pallet: 112
Shelf Life: 720 days
Globe Code: 11003938



0 13800 30130 7





STOURFFER'S Broccoli Au Gratin

Pack Size: 4 units x 94 oz.
Cases per pallet: 94
Shelf Life: 720 days
Globe Code: 11003970



STOURFFER'S

White Cheddar Macaroni and Cheese

Pack Size: 4 Units x 64 oz.
Cases per pallet: 144
Shelf Life: 540 days
Globe Code: 12336681



STOURFFER'S Potatoes Au Gratin

Pack Size: 4 units x 76 oz.
Cases per pallet: 112
Shelf Life: 420 days
Globe Code: 11003973



STOURFFER'S

Creamed Spinach

Pack Size: 4 units x 96 oz.
Cases per pallet: 81
Shelf Life: 720 days
Globe Code: 12204402



STOURFFER'S Macaroni and Cheese 98oz

Pack Size: 4 units x 98 oz.
Cases per pallet: 91
Shelf Life: 720 days
Globe Code: 11003987



STOURFFER'S

Alfredo Sauce Gluten Free

Pack Size: 4 units x 96 oz.
Cases per pallet: 81
Shelf Life: 540 days
Globe Code: 12507781



STOURFFER'S Artichoke Dip Pouch

Pack Size: 4 units x 64 oz.
Cases per pallet: 144
Shelf Life: 600 days
Globe Code: 11004081



STOURFFER'S

Poultry Gravy

Pack Size: 4 units x 9 6oz.
Cases per pallet: 126
Shelf Life: 540 days
Globe Code: 12444390



**STOUFFER'S**
Meatloaf & Gravy

Pack Size: 4 units x 58 oz.
Cases per pallet: 112
Shelf Life: 300 days
Globe Code: 11003960



0 138003 003312

**STOUFFER'S**
Salisbury Steak

Pack Size: 4 Units x 69 oz.
Cases per pallet: 112
Shelf Life: 720 days
Globe Code: 11000342



0 138003 006078





HOT POCKETS

Pepperoni Pizza 8oz

Pack Size: 12 units x 8 oz.
Cases per pallet: 140
Shelf Life: 420 days
Globe Code: 11007683



HOTPOCKETS

Pepperoni Pizza 4oz

Pack Size: 30 Units x 4 oz.
Cases per pallet: 75
Shelf Life: 420 days
Globe Code: 12495730



HOTPOCKETS

Meatball Mozzarella

Pack Size: 12 Units x 8 oz.
Cases per pallet: 140
Shelf Life: 420 days
Globe Code: 11007684



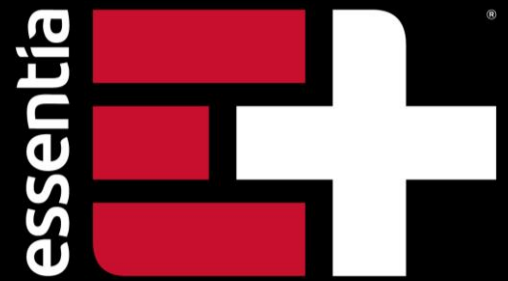
HOTPOCKETS

Ham & Cheese

Pack Size: 12 Units x 8 oz.
Cases per pallet: 140
Shelf Life: 420 days
Globe Code: 11007685



#1 ALKALINE WATER CREATED IN THE US



overachieving H₂O

WHAT MAKES

ESSENTIA

BETTER?

Differentiated
product



Essentia Nation
connects to
Overachievers
to **power** their
resilience



Flawless
execution at
retail



Like-minded people **competing, performing,** creating
and **striving** to be the **BEST VERSION** of themselves



SUPERCARGED

99.9% pure premium water with a
balance of electrolytes and minerals
that complement body's mix

ALKALINE WATER

Essentia provides the body with
necessary hydration

ELECTROLYTES

Essentia is infused with trace amounts
of electrolytes to better complement
the body's natural mix.



WORK
OR
DAY TRIP



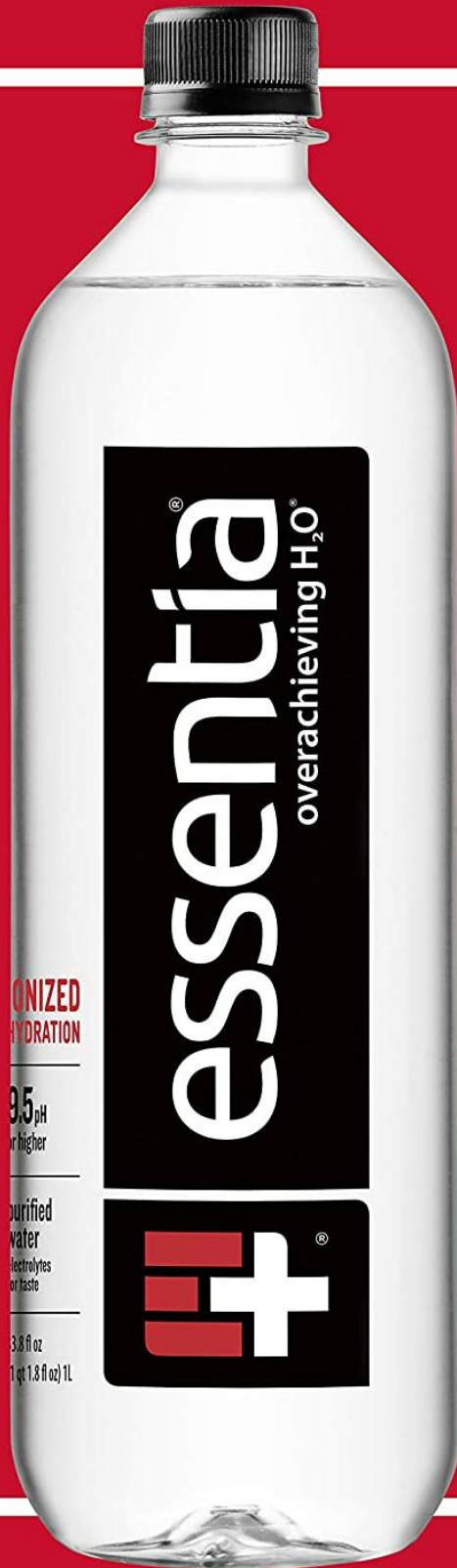
GRAB
AND
GO



YOUR
THIRST
QUENCHER



EVERYONE
PERFORMING
THEIR BEST



SUPERCHARGED HYDRATION



Purified to
99.9% with
9.5pH or higher



Infused with
electrolytes



Ionized
for a clean,
smooth taste



Essentia 12oz

Pack Size: 2 x 12 x 12 oz Tray
Cases per pallet: 91
Shelf Life: 720 days
Globe Code: 902412



Essentia 20oz

Pack Size: 24 units x 20 oz
Cases per pallet: 54
Shelf Life: 720 days
Globe Code: 902420



Essentia 700 ml

Pack Size: 24 units x 20 oz
Cases per pallet: 54
Shelf Life: 720 days
Globe Code: 901224



Essentia 1-Liter

Pack Size: 12 units x 1 liter
Cases per pallet: 75
Shelf Life: 720 days
Globe Code: 901210



Essentia 1.5-Liter

Pack Size: 12 units x 1 liter
Cases per pallet: 55
Shelf Life: 720 days
Globe Code: 901215



Essentia 1 Liter 6-Pack

Pack Size: 2 6-pack per case
Cases per pallet: 75
Shelf Life: 720 days
Globe Code: 920633



Essentia 16.9 oz 6-pack

Pack Size: 4 6-packs per case
Cases per pallet: 60
Shelf Life: 720 days
Globe Code: 900617



Essentia 2 gallon

Pack Size: 2 units x 2 gallons
Cases per pallet: 48
Shelf Life: 540 days
Globe Code: 900280





Nestlé

Good Food, Good Life

All trademarks are owned by Société des Produits Nestlé S.A., Vevey, Switzerland, or used with permission.