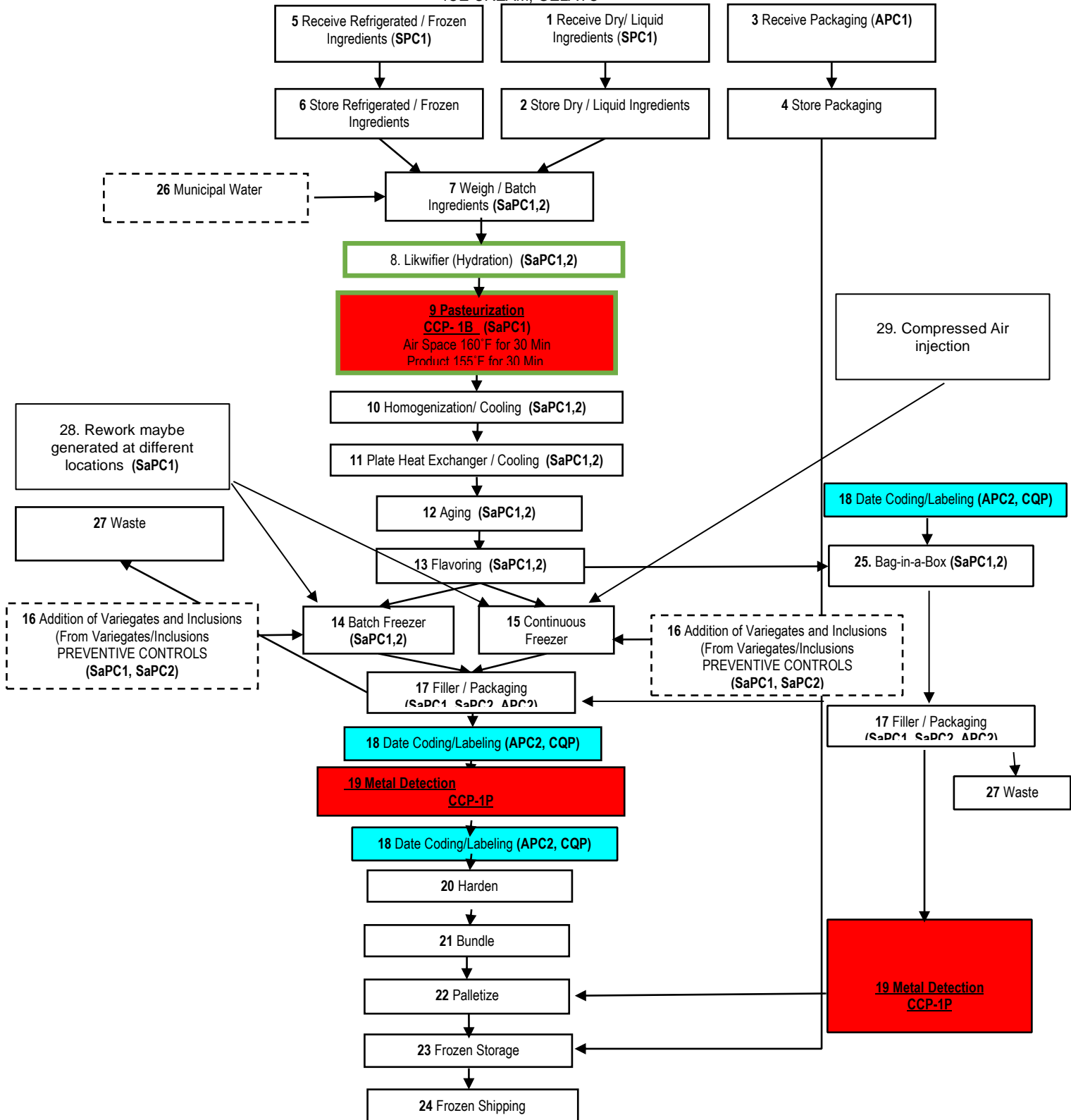


FLOW CHART **ICE CREAM, GELATO**



Document: Flow Chart Revision: 010	Page 1 of 3	Authorized by: CEO Approved by: SQF Practitioner
Process Category: ICE CREAM, GELATO & SORBET	Plant Address: 1730 B West Oak Common Court Marietta, GA 30062	Date of Issue: 11-01-2014 Effective Date: 12-16-2021

FLOW CHART
ICE CREAM, GELATO

Box - Process Steps, **Dashes Box** - On Demand steps, **Box** - Mix Steps,



Ruth Ngigi
QA Supervisor / SQF Practitioner

12/16/2021

Date

Rev. #	Date	Changes Made	Justification	By
000	11-1-14	New		JSS
001	8-4-16	Updated SQF Practitioner signature by Chief Manufacturing Officer Steve Roddy		SR
002	4-10-18	Updated SQF Practitioner signature to QA Supervisor Rebecca Middleton		RM
003	9-13-18	Updated SQF Practitioner by Yu-Hsin Pang. Delete sorbet from the title		YP
004	2-18-19	Deleted rework and some arrows to the waste, added variegate and inclusion HACCP		YP
005	4-29-19	Updated SQF Practitioner signature	New SQF practitioner	RN
006	5-15-19	Changed pasteurization temperatures to 155F for product and 160F	Previous higher temperatures were elongating cook time causing chart recorder to go off the charts	RN
		Added a justification column in the document	Each change needs to be justified	
007	07-23-19	Added the rework process and accounted for the hazards	Rework hazards need to be evaluated to make sure they are mitigated correctly	RN
008	12-04-19	Validate process flow of Bag-in-a-Box process	Recent preventive controls meeting task	RN
009	08-03-20	Modified hardening step to come after date coding.	To accommodate new tunnel	RN
010	12-16-21	Added PC on Flow diagram and modified color for CQP	To meet SQF requirements and make it easier for the reader to navigate.	RN

Flow Chart Verified by :



Date:

12-16-2021

Document: Flow Chart Revision: 010	Page 2 of 3	Authorized by: CEO Approved by: SQF Practitioner
Process Category: ICE CREAM, GELATO & SORBET	Plant Address: 1730 B West Oak Common Court Marietta, GA 30062	Date of Issue: 11-01-2014 Effective Date: 12-16-2021

FLOW CHART
ICE CREAM, GELATO

Document: Flow Chart Revision: 010	Page 3 of 3	Authorized by: CEO Approved by: SQF Practitioner
Process Category: ICE CREAM, GELATO & SORBET	Plant Address: 1730 B West Oak Common Court Marietta, GA 30062	Date of Issue: 11-01-2014 Effective Date: 12-16-2021

This material constitutes trade secrets and / or commercial or financial information, is privileged or confidential and is considered by this Company to fall within the exception from disclosure of the freedom of information act contained in 5 USC 522(b) (4) and may not be disclosed without prior approval of this Company.